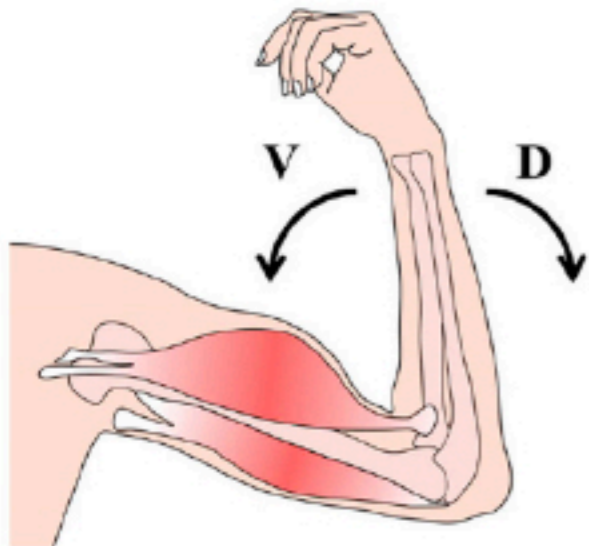
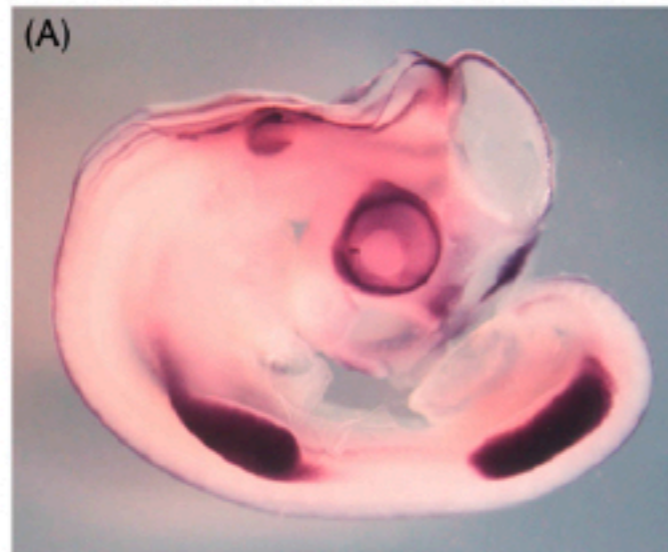


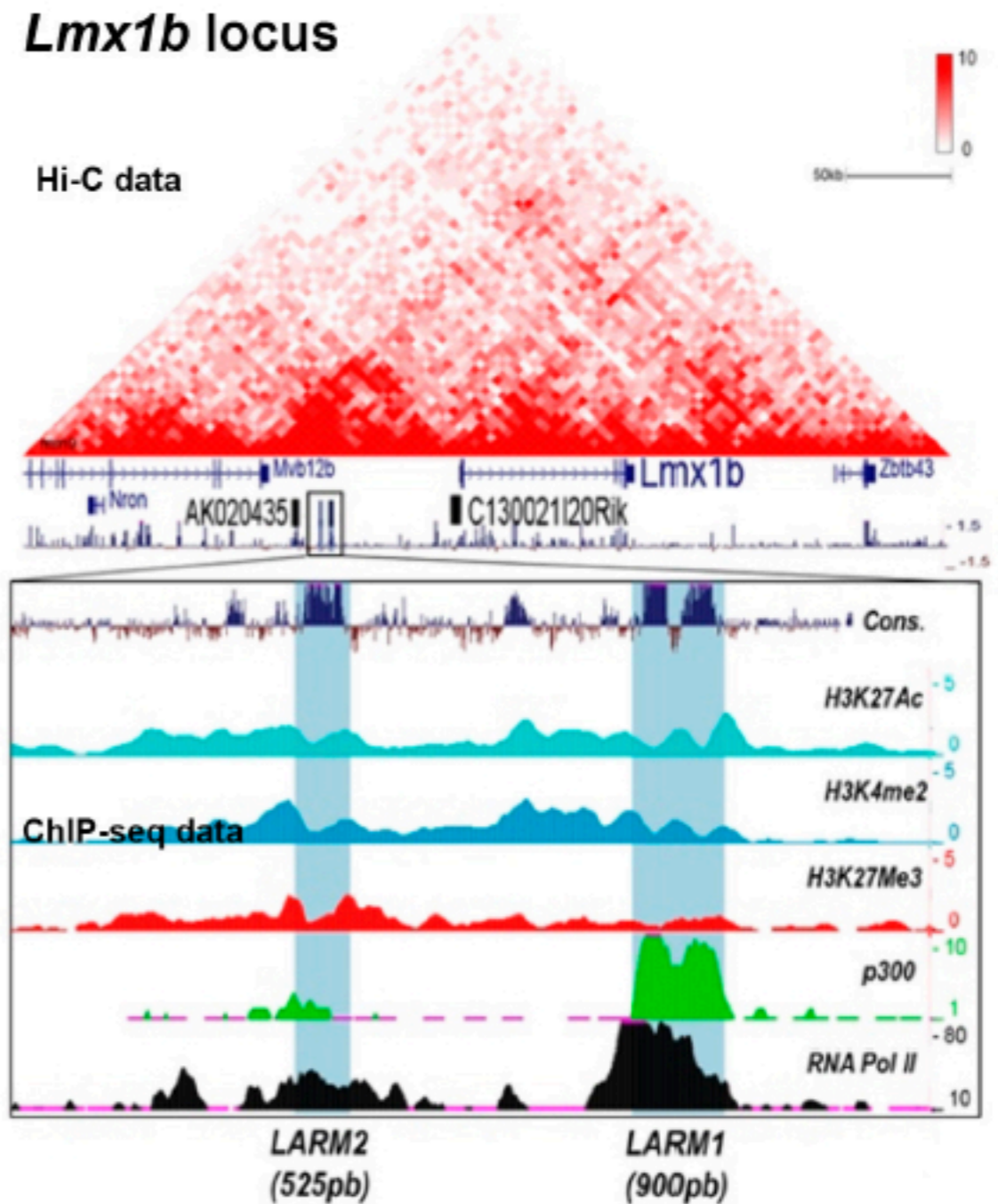
DV function



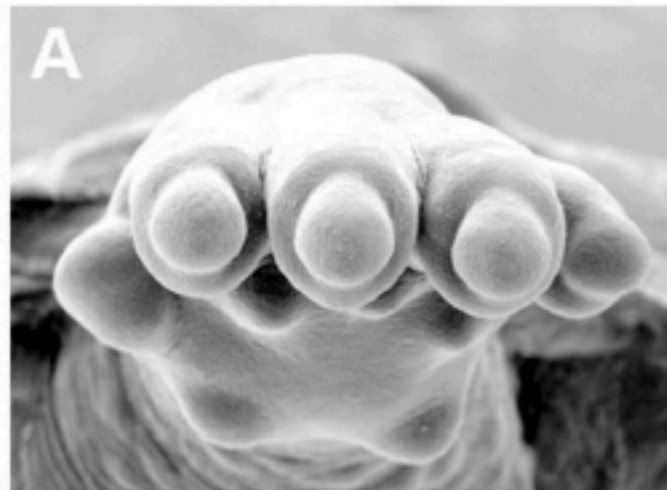
Lmx1b expression



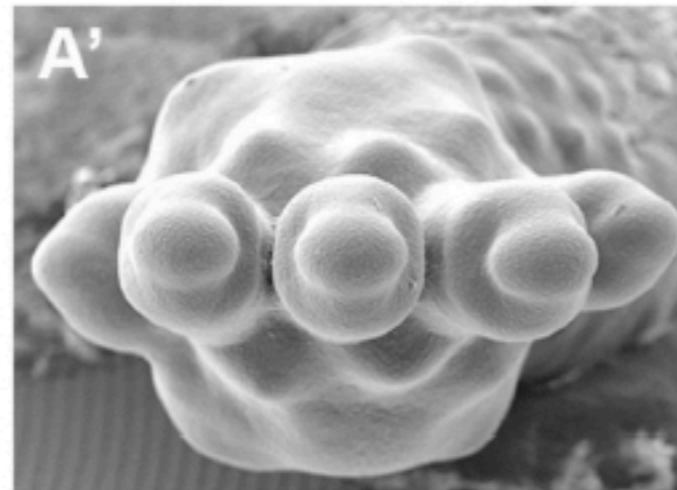
Lmx1b locus



With *Lmx1b*



Without *Lmx1b*



double-ventral limb

Left: *Lmx1b*, essential for dorso-ventral patterning of the limb, is expressed in the dorsal half of the developing limb bud. *Lmx1b* deletion results in the formation of double ventral limbs, as shown in the SEM micrograph.

Right: The regulatory landscape of *Lmx1b* includes limb-specific enhancers (*LARMs*) with redundant and modular activity.