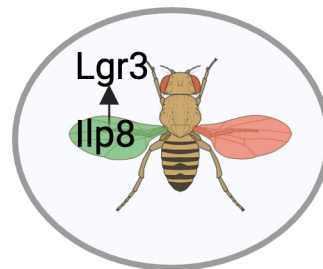


Mechanism of growth control and cancer

Specific Aims



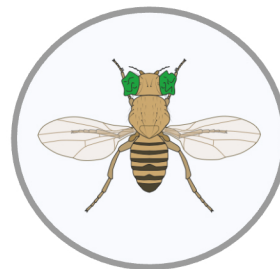
AIM 1

- Unraveling the Mechanisms of Ilp8-Lgr3 Circuitry in Maintaining Body Size and Ensuring Symmetry

AIM 2

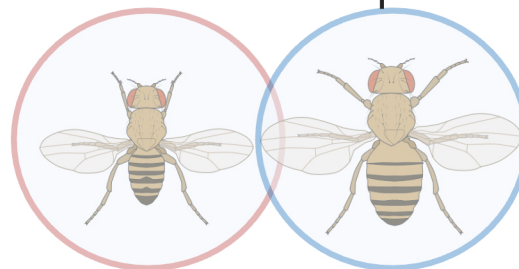
- Elucidating the Interplay between Immune Checkpoints and Brain Circuits in Promoting and Inhibiting Cancer Progression

A holistic approach to cancer initiation and its aftermath,



AIM 3

- Establishing Causal Relationships in the Genetics of Cancer Resilience and Frailty



AIM 5

- Exploring the Regulation of Gender Differences in Hormone-Mediated Cancer Susceptibility: Is Sex-Biased Risk Hardwired or Modifiable?