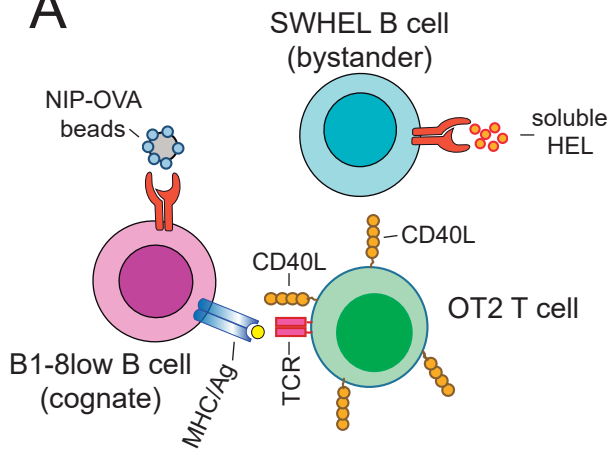


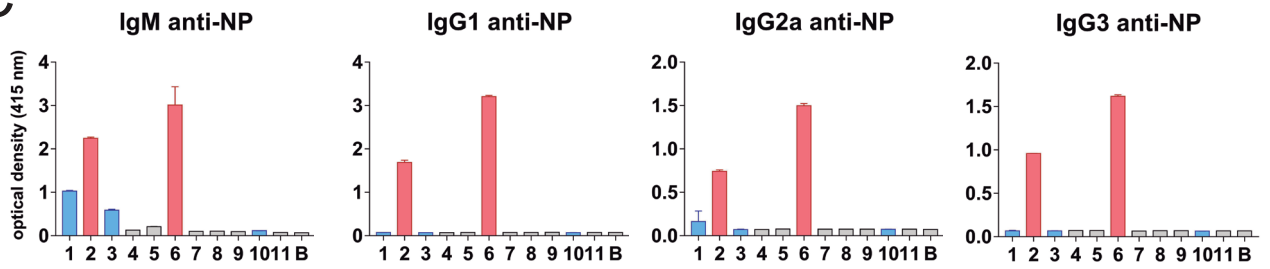
A



B

components	HEL	NP	HEL	-	-	NP	-	-	-	HEL	-	-
sample no.:	1	2	3	4	5	6	7	8	9	10	11	B
B1-8low B cells	+	+	+	+	+	+	+	+	-	-	-	-
SWHEL B cells	+	+	+	+	-	-	-	-	+	+	+	-
NIP-OVA beads	-	+	-	-	-	+	-	-	+	-	-	-
HEL-OVA beads	+	-	+	-	+	-	+	-	-	+	-	-
NP-BSA soluble	+	-	-	+	+	-	-	+	-	-	+	-
OT2 T cells	+	+	+	+	+	+	+	+	+	+	+	-

C



D

